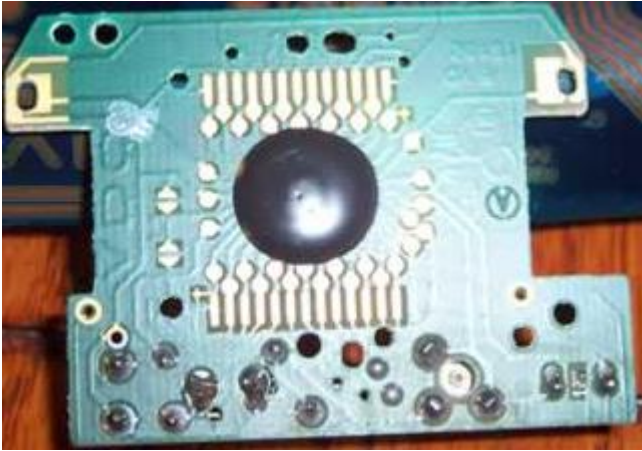


# Volkswagen Cabriolet DIY Guide

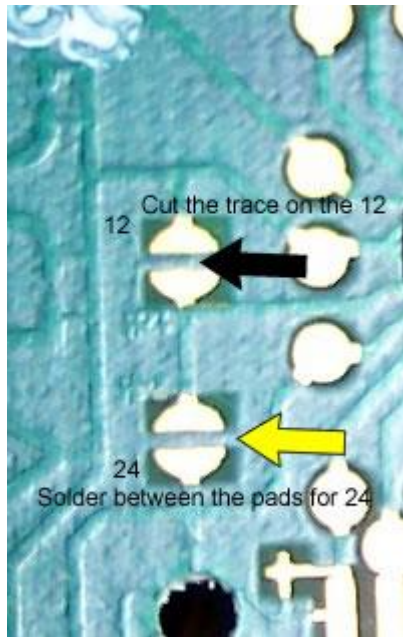
Clock: 12hr to/from 24hr

## VDO



(Clock circuit board)

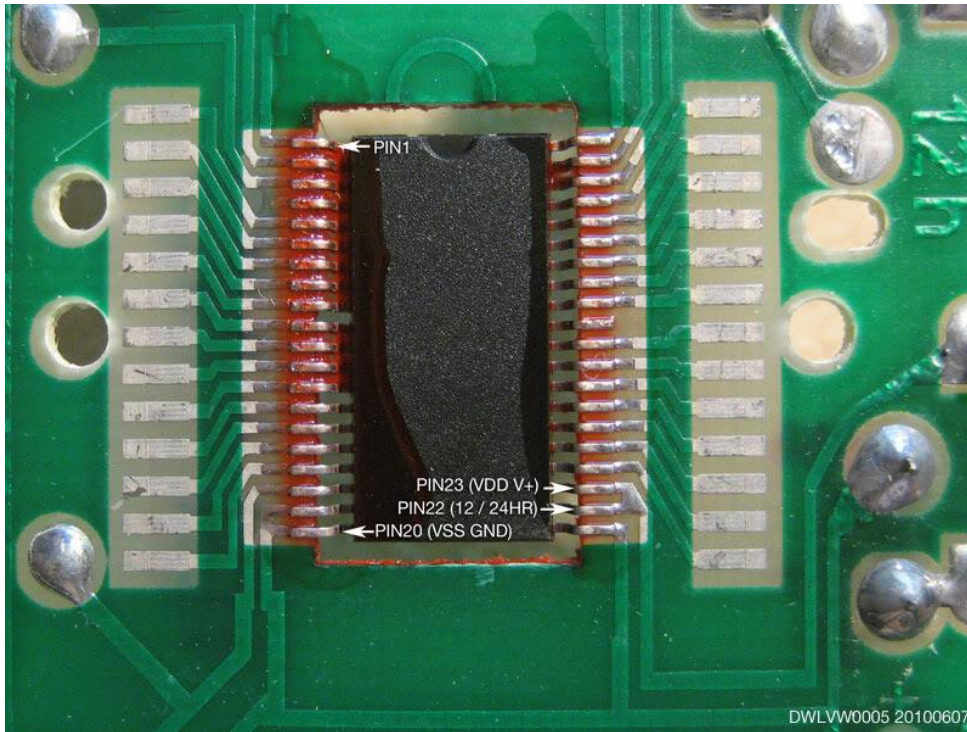
Looking VERY closely at the circuit board you'll see two solder pads with the labels 12H and 24H next to them. (shown here on the left)



The 12H pads on this one are shorted out by a circuit trace. The 24H is not. To change the clock from 12 to 24, simply cut the 12-hour trace where shown with an Exacto knife, and solder across the 24-hour pads (reverse procedure to change from 24-hour to 12-hour).

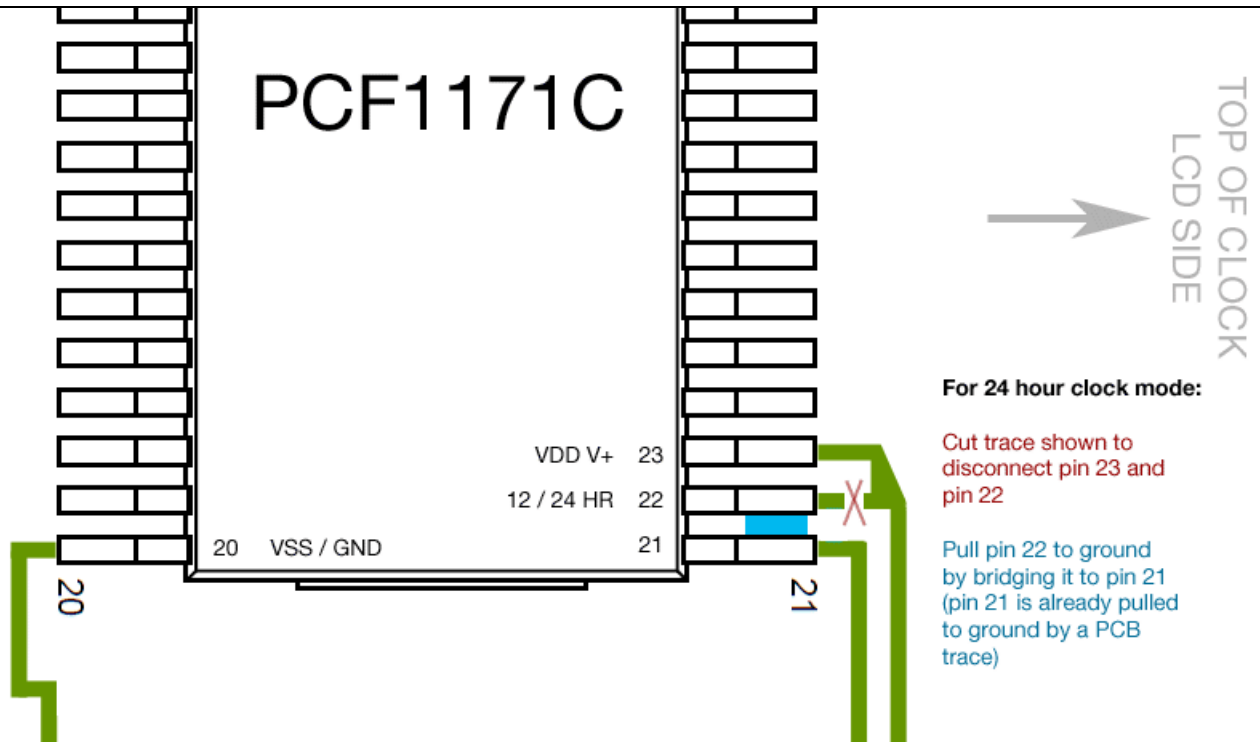
If you wanted to get fancy you could solder in a switch to change back and forth.

Courtesy of Moljinar on VWvortex: <http://forums.vwvortex.com/showthread.php?2573508> .



(Clock circuit board)

If pin 22 is pulled to V+, the clock operates in 12 hour mode (factory default)  
 If pin 22 is pulled to GND, the clock operates in 24 hour mode.



Courtesy of dandydanny of VWvortex: <http://forums.vwvortex.com/showthread.php?4912761> .