

Volkswagen Cabriolet DIY Guide

Determining Your Car's Build Date

Model Year: 1979

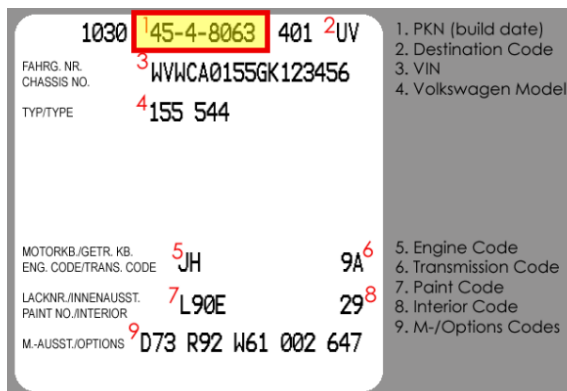
Step 1: Locate the 3rd digit in your car's VIN plate on the dash. This digit should be a **9**. If it is not, it is not a 1979 model year Cabriolet. Also make note of the last 5 digits, which are the car's chassis number:



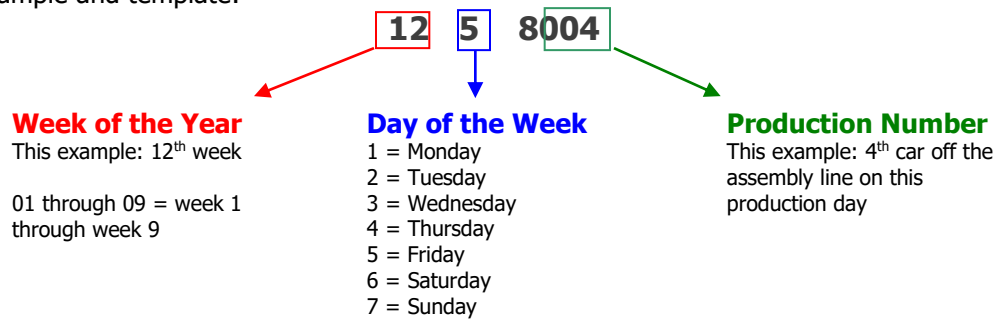
Step 2: Locate the build month on the driver's side door jamb and/or in the table below using the chassis number. Above examples: 9-01964 is March 1979; 9-05427 is July 1979.

Begin Date	End Date	Begin Chassis #	End Chassis #
January 1, 1979	January 31, 1979	9-00001	9-?????
February 1, 1979	February 28, 1979	9-?????	9-01076
March 1, 1979	March 31, 1979	9-01077	9-02198
April 1, 1979	April 30, 1979	9-02199	9-03160
May 1, 1979	May 31, 1979	9-03161	9-04128
June 1, 1979	June 30, 1979	9-04129	9-05371
July 1, 1979	July 31, 1979	9-05372	9-10000

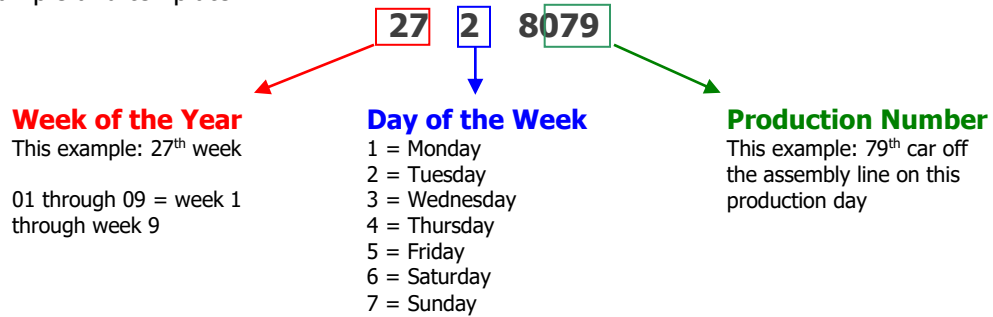
Step 3: Inside the trunk, locate your car's build sheet sticker on the left side of the crossbar. On this sticker, locate the PKN code at the top of the sticker. Or locate the stamped PKN plate on the radiator core support/slam panel.



9-01964's PKN example and template:



9-05427's PKN example and template:



Step 3: Use the calendars on page 3 to find your car's build date based on the above template.

9-01964's build date: Friday, March 23, 1979

9-05427's build date: Tuesday, July 3, 1979

The calendars all have week numbers at the beginning of each week and are for the Germany calendar (no adjustment needed).

1979

January							
Week	Mo	Tu	We	Th	Fr	Sa	Su
1	1	2	3	4	5	6	7
2	8	9	10	11	12	13	14
3	15	16	17	18	19	20	21
4	22	23	24	25	26	27	28
5	29	30	31				

February							
Week	Mo	Tu	We	Th	Fr	Sa	Su
5				1	2	3	4
6	5	6	7	8	9	10	11
7	12	13	14	15	16	17	18
8	19	20	21	22	23	24	25
9	26	27	28				

March							
Week	Mo	Tu	We	Th	Fr	Sa	Su
9				1	2	3	4
10	5	6	7	8	9	10	11
11	12	13	14	15	16	17	18
12	19	20	21	22	23	24	25
13	26	27	28	29	30	31	

April							
Week	Mo	Tu	We	Th	Fr	Sa	Su
13							1
14	2	3	4	5	6	7	8
15	9	10	11	12	13	14	15
16	16	17	18	19	20	21	22
17	23	24	25	26	27	28	29
18	30						

May							
Week	Mo	Tu	We	Th	Fr	Sa	Su
18		1	2	3	4	5	6
19	7	8	9	10	11	12	13
20	14	15	16	17	18	19	20
21	21	22	23	24	25	26	27
22	28	29	30	31			

June							
Week	Mo	Tu	We	Th	Fr	Sa	Su
22					1	2	3
23	4	5	6	7	8	9	10
24	11	12	13	14	15	16	17
25	18	19	20	21	22	23	24
26	25	26	27	28	29	30	

July							
Week	Mo	Tu	We	Th	Fr	Sa	Su
26							1
27	2	3	4	5	6	7	8
28	9	10	11	12	13	14	15
29	16	17	18	19	20	21	22
30	23	24	25	26	27	28	29
31	30	31					

August							
Week	Mo	Tu	We	Th	Fr	Sa	Su
31			1	2	3	4	5
32	6	7	8	9	10	11	12
33	13	14	15	16	17	18	19
34	20	21	22	23	24	25	26
35	27	28	29	30	31		

September							
Week	Mo	Tu	We	Th	Fr	Sa	Su
35						1	2
36	3	4	5	6	7	8	9
37	10	11	12	13	14	15	16
38	17	18	19	20	21	22	23
39	24	25	26	27	28	29	30

October							
Week	Mo	Tu	We	Th	Fr	Sa	Su
40	1	2	3	4	5	6	7
41	8	9	10	11	12	13	14
42	15	16	17	18	19	20	21
43	22	23	24	25	26	27	28
44	29	30	31				

November							
Week	Mo	Tu	We	Th	Fr	Sa	Su
44				1	2	3	4
45	5	6	7	8	9	10	11
46	12	13	14	15	16	17	18
47	19	20	21	22	23	24	25
48	26	27	28	29	30		

December							
Week	Mo	Tu	We	Th	Fr	Sa	Su
48						1	2
49	3	4	5	6	7	8	9
50	10	11	12	13	14	15	16
51	17	18	19	20	21	22	23
52	24	25	26	27	28	29	30
1	31						

Calendars created at www.timeanddate.com.