

Volkswagen Cabriolet DIY Guide

Determining Your Car's Build Date

Model Year: 1983

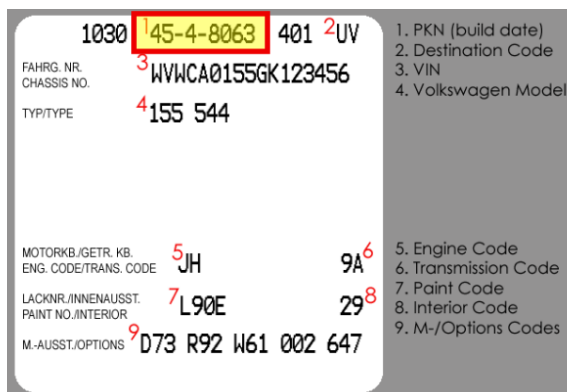
Step 1: Locate the 10th digit in your car's VIN plate on the dash. This digit should be a **D**. If it is not, it is not a 1983 model year Cabriolet. Also make note of the last 5 digits, which are the car's chassis number:



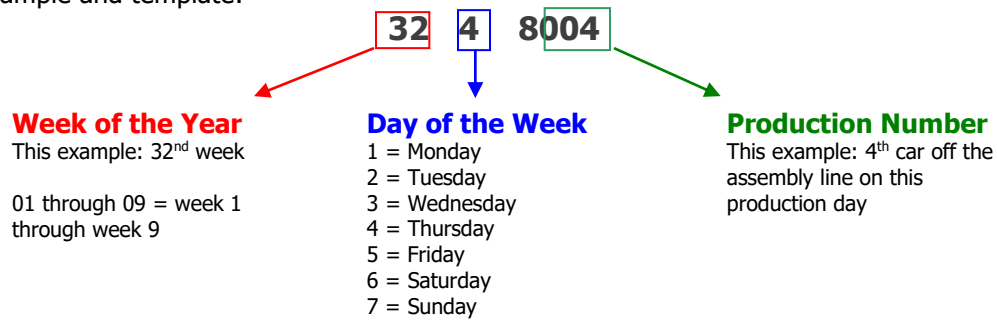
Step 2: Locate the build month on the driver's side door jamb and/or in the table below using the chassis number. Above examples: D-00672 is August 1982; D-16672 is July 1983.

Begin Date	End Date	Begin Chassis #	End Chassis #
August 1, 1982	August 31, 1982	D-00001	D-01271
September 1, 1982	September 30, 1982	D-01272	D-02965
October 1, 1982	October 31, 1982	D-02966	D-04078
November 1, 1982	November 30, 1982	D-04079	D-05577
December 1, 1982	December 31, 1982	D-05578	D-06076
January 1, 1983	January 31, 1983	D-06077	D-06724
February 1, 1983	February 28, 1983	D-06725	D-07548
March 1, 1983	March 31, 1983	D-07549	D-09171
April 1, 1983	April 30, 1983	D-09172	D-10995
May 1, 1983	May 31, 1983	D-10996	D-13229
June 1, 1983	June 30, 1983	D-13230	D-15731
July 1, 1983	July 31, 1983	D-15732	D-20000

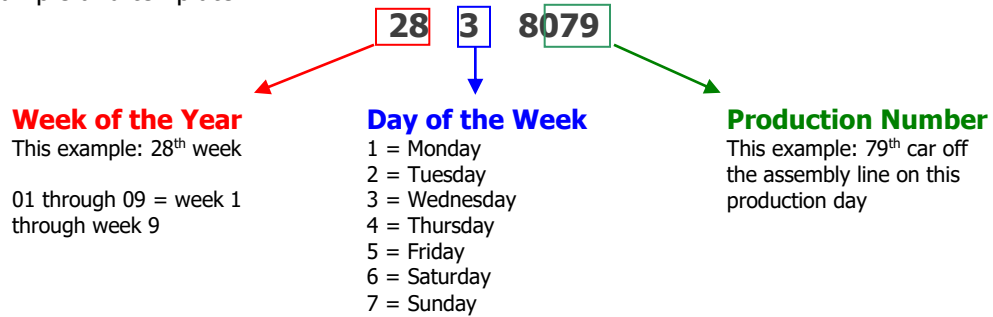
Step 3: Inside the trunk, locate your car's build sheet sticker on the left side of the crossbar. On this sticker, locate the PKN code at the top of the sticker. Or locate the stamped PKN plate on the radiator core support/slam panel.



D-00672's PKN example and template:



D-16672's PKN example and template:



Step 3: Use the calendars on pages 3 through 4 to find your car's build date based on the above template.

D-00672's build date: Friday, August 13, 1982

D-16672's build date: Wednesday, June 13, 1983

The calendars all have week numbers at the beginning of each week and are for the Germany calendar (no adjustment needed).

1982

January							
Week	Mo	Tu	We	Th	Fr	Sa	Su
53					1	2	3
1	4	5	6	7	8	9	10
2	11	12	13	14	15	16	17
3	18	19	20	21	22	23	24
4	25	26	27	28	29	30	31

February							
Week	Mo	Tu	We	Th	Fr	Sa	Su
5	1	2	3	4	5	6	7
6	8	9	10	11	12	13	14
7	15	16	17	18	19	20	21
8	22	23	24	25	26	27	28

March							
Week	Mo	Tu	We	Th	Fr	Sa	Su
9	1	2	3	4	5	6	7
10	8	9	10	11	12	13	14
11	15	16	17	18	19	20	21
12	22	23	24	25	26	27	28
13	29	30	31				

April							
Week	Mo	Tu	We	Th	Fr	Sa	Su
13				1	2	3	4
14	5	6	7	8	9	10	11
15	12	13	14	15	16	17	18
16	19	20	21	22	23	24	25
17	26	27	28	29	30		

May							
Week	Mo	Tu	We	Th	Fr	Sa	Su
17						1	2
18	3	4	5	6	7	8	9
19	10	11	12	13	14	15	16
20	17	18	19	20	21	22	23
21	24	25	26	27	28	29	30
22	31						

June							
Week	Mo	Tu	We	Th	Fr	Sa	Su
22		1	2	3	4	5	6
23	7	8	9	10	11	12	13
24	14	15	16	17	18	19	20
25	21	22	23	24	25	26	27
26	28	29	30				

July							
Week	Mo	Tu	We	Th	Fr	Sa	Su
26				1	2	3	4
27	5	6	7	8	9	10	11
28	12	13	14	15	16	17	18
29	19	20	21	22	23	24	25
30	26	27	28	29	30	31	

August							
Week	Mo	Tu	We	Th	Fr	Sa	Su
30							1
31	2	3	4	5	6	7	8
32	9	10	11	12	13	14	15
33	16	17	18	19	20	21	22
34	23	24	25	26	27	28	29
35	30	31					

September							
Week	Mo	Tu	We	Th	Fr	Sa	Su
35			1	2	3	4	5
36	6	7	8	9	10	11	12
37	13	14	15	16	17	18	19
38	20	21	22	23	24	25	26
39	27	28	29	30			

October							
Week	Mo	Tu	We	Th	Fr	Sa	Su
39					1	2	3
40	4	5	6	7	8	9	10
41	11	12	13	14	15	16	17
42	18	19	20	21	22	23	24
43	25	26	27	28	29	30	31

November							
Week	Mo	Tu	We	Th	Fr	Sa	Su
44	1	2	3	4	5	6	7
45	8	9	10	11	12	13	14
46	15	16	17	18	19	20	21
47	22	23	24	25	26	27	28
48	29	30					

December							
Week	Mo	Tu	We	Th	Fr	Sa	Su
48			1	2	3	4	5
49	6	7	8	9	10	11	12
50	13	14	15	16	17	18	19
51	20	21	22	23	24	25	26
52	27	28	29	30	31		

1983

January							
Week	Mo	Tu	We	Th	Fr	Sa	Su
52						1	2
1	3	4	5	6	7	8	9
2	10	11	12	13	14	15	16
3	17	18	19	20	21	22	23
4	24	25	26	27	28	29	30
5	31						

February							
Week	Mo	Tu	We	Th	Fr	Sa	Su
5		1	2	3	4	5	6
6	7	8	9	10	11	12	13
7	14	15	16	17	18	19	20
8	21	22	23	24	25	26	27
9	28						

March							
Week	Mo	Tu	We	Th	Fr	Sa	Su
9		1	2	3	4	5	6
10	7	8	9	10	11	12	13
11	14	15	16	17	18	19	20
12	21	22	23	24	25	26	27
13	28	29	30	31			

April							
Week	Mo	Tu	We	Th	Fr	Sa	Su
13					1	2	3
14	4	5	6	7	8	9	10
15	11	12	13	14	15	16	17
16	18	19	20	21	22	23	24
17	25	26	27	28	29	30	

May							
Week	Mo	Tu	We	Th	Fr	Sa	Su
17							1
18	2	3	4	5	6	7	8
19	9	10	11	12	13	14	15
20	16	17	18	19	20	21	22
21	23	24	25	26	27	28	29
22	30	31					

June							
Week	Mo	Tu	We	Th	Fr	Sa	Su
22			1	2	3	4	5
23	6	7	8	9	10	11	12
24	13	14	15	16	17	18	19
25	20	21	22	23	24	25	26
26	27	28	29	30			

July							
Week	Mo	Tu	We	Th	Fr	Sa	Su
26					1	2	3
27	4	5	6	7	8	9	10
28	11	12	13	14	15	16	17
29	18	19	20	21	22	23	24
30	25	26	27	28	29	30	31

August							
Week	Mo	Tu	We	Th	Fr	Sa	Su
31	1	2	3	4	5	6	7
32	8	9	10	11	12	13	14
33	15	16	17	18	19	20	21
34	22	23	24	25	26	27	28
35	29	30	31				

September							
Week	Mo	Tu	We	Th	Fr	Sa	Su
35				1	2	3	4
36	5	6	7	8	9	10	11
37	12	13	14	15	16	17	18
38	19	20	21	22	23	24	25
39	26	27	28	29	30		

October							
Week	Mo	Tu	We	Th	Fr	Sa	Su
39						1	2
40	3	4	5	6	7	8	9
41	10	11	12	13	14	15	16
42	17	18	19	20	21	22	23
43	24	25	26	27	28	29	30
44	31						

November							
Week	Mo	Tu	We	Th	Fr	Sa	Su
44		1	2	3	4	5	6
45	7	8	9	10	11	12	13
46	14	15	16	17	18	19	20
47	21	22	23	24	25	26	27
48	28	29	30				

December							
Week	Mo	Tu	We	Th	Fr	Sa	Su
48				1	2	3	4
49	5	6	7	8	9	10	11
50	12	13	14	15	16	17	18
51	19	20	21	22	23	24	25
52	26	27	28	29	30	31	

Calendars created at www.timeanddate.com.