



THE 1987 VOLKSWAGEN
WOLFSBURG LIMITED EDITION SERIES



Cabby-Info.com



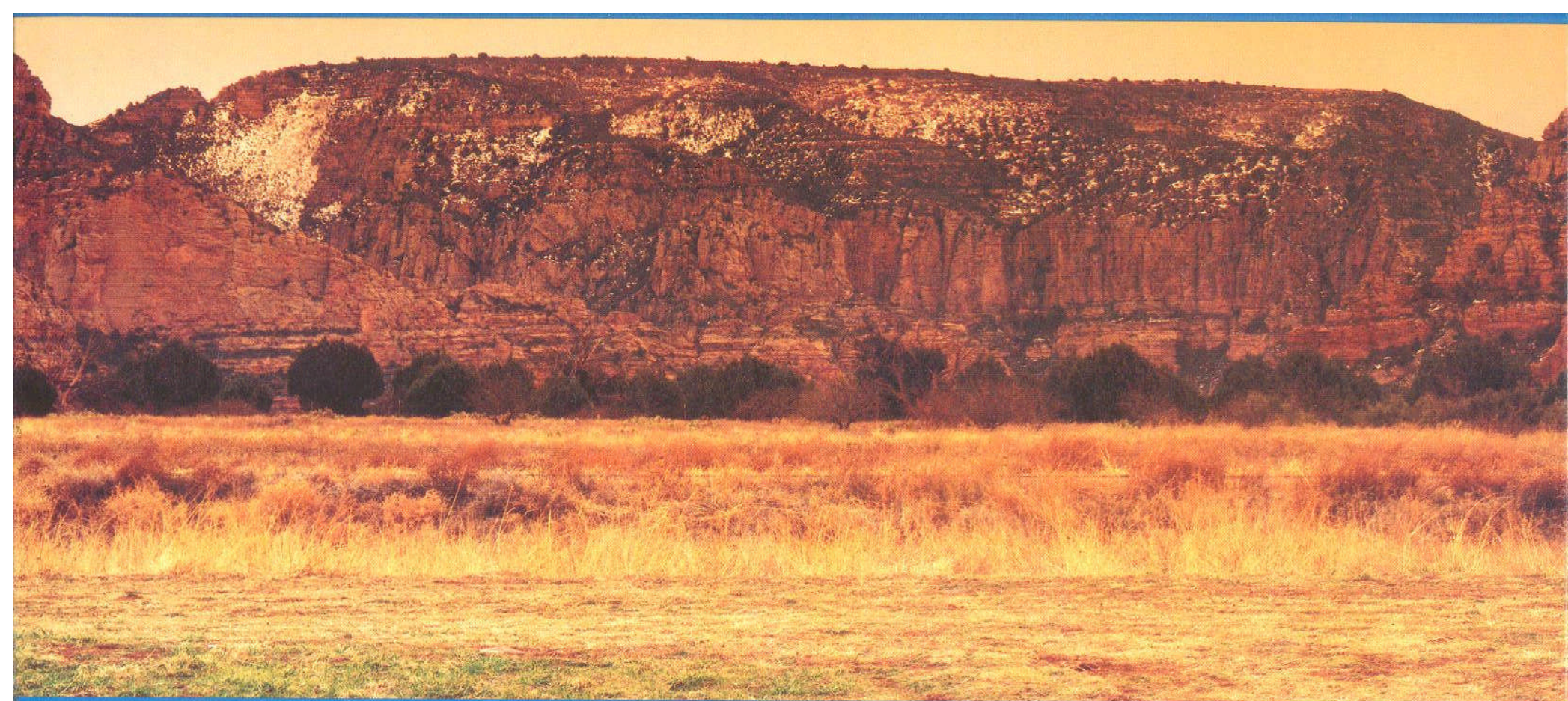
WOLFSBURG LIMITED EDITION

CABRIOLET

The Wolfsburg Limited Edition Cabriolet is a standout from top to bottom. The stylish body, crafted by the legendary Karmann Coachworks, features body-colored wheelhouse flares, mirror housings and alloy wheels. The top has three layers, is fully insulated and even has a heated rear glass



wind in your hair. A 1.8 liter fuel-injected engine coupled to a 5-speed transmission provides the power. While the independent sport suspension with stabilizer bars, quick-ratio power rack and pinion steering and vented front disc brakes add sparkling performance. You'll relax in white leather sport seats and listen to an AM/FM stereo cassette radio with four speakers. Obviously, the Wolfsburg Limited Edition Cabriolet is an automotive value that's hard to top. So



WLE JETTA MAJOR STANDARD FEATURES

1.8 LITER FUEL-INJECTED HIGH PERFORMANCE ENGINE;
5-SPEED TRANSMISSION; POWER RACK AND PINION STEERING;
POWER ASSISTED 4-WHEEL DISC BRAKES; STEEL BELTED RADIALS

BLACK REAR DECK SPOILER; LARGE FRONT SPOILER

6J x 14 ALLOY WHEELS

DECOR STRIPING

FULL INSTRUMENTATION: SPEEDOMETER, TRIP-ODOMETER,
CLOCK, TACHOMETER, UPSHIFT INDICATOR LIGHT, FUEL GAUGE,
WATER TEMPERATURE GAUGE, WARNING CHIMES AND
WARNING LIGHTS

UNIQUE VELOUR UPHOLSTERY WITH LEATHERETTE BOLSTERS

COLOR COORDINATED FULL CARPETING

SPORT STEERING WHEEL; POWER MIRRORS

FULL CENTER CONSOLE WITH ASHTRAY, CIGARETTE LIGHTER,
AND REAR SEAT HEATER DUCTS

OPTIONS

AIR CONDITIONING; SUNROOF; AUTOMATIC TRANSMISSION;
CRUISE CONTROL; POWER WINDOWS AND CENTRAL LOCKING;
AM/FM STEREO CASSETTE RADIO WITH 4 SPEAKERS,
ANTI-THEFT FEATURE AND CASSETTE STORAGE TRAY;
PASSIVE RESTRAINT SYSTEM

WLE CABRIOLET MAJOR STANDARD FEATURES

1.8 LITER FUEL-INJECTED ENGINE; 5-SPEED CLOSE-RATIO
TRANSMISSION; POWER RACK AND PINION STEERING;
PERFORMANCE SUSPENSION WITH FRONT AND REAR STABILIZER
BARS; POWER ASSISTED BRAKES (FRONT DISC/REAR DRUMS)

BODY COLOR MIRROR HOUSINGS AND WHEELHOUSE FLARES

WHITE PADDED SOFT TOP AND PROTECTIVE BOOT

COLOR KEYED 6J x 14 ALLOY WHEELS

FULL INSTRUMENTATION: SPEEDOMETER, TRIP ODOMETER,
TACHOMETER, DIGITAL CLOCK

FULLY RECLINING SPORT SEATS IN WHITE LEATHER WITH
MATCHING LEATHERETTE TRIM

LEFT AND RIGHT FRONT SEAT HEIGHT ADJUSTMENT

LEATHER STEERING WHEEL AND GEAR SHIFT KNOB

CENTER CONSOLE WITH OIL PRESSURE AND TEMPERATURE
GAUGES AND A VOLTMETER

AM/FM STEREO CASSETTE RADIO WITH 4 SPEAKERS,
ANTI-THEFT FEATURE AND CASSETTE STORAGE TRAY

OPTIONS

AIR CONDITIONING; AUTOMATIC TRANSMISSION;
CRUISE CONTROL

WLE VANAGON GL MAJOR STANDARD FEATURES

2.1 LITER FUEL-INJECTED ENGINE; 4-SPEED MANUAL
TRANSMISSION; POWER RACK AND PINION STEERING; POWER
ASSISTED BRAKES (FRONT DISCS/REAR DRUMS);
STEEL BELTED RADIAL TIRES

COLOR KEYED WRAP-AROUND BUMPERS

LOWERED SUSPENSION AND FRONT SPOILER

POWER MIRRORS; CENTRAL LOCKING SYSTEM

FULL INSTRUMENTATION: SPEEDOMETER, TRIP ODOMETER,
TACHOMETER, DIGITAL CLOCK

DELUXE VELOUR SEATS; 2 REMOVABLE REAR-FACING FOLDING
SEATS; FOLDING REAR BENCH SEAT WITH 3 HEADRESTS

INTERIOR SIDE PANEL WITH INTEGRATED ARMREST;
FOLDING TABLE AND CUP HOLDERS; FULL CARPETING

ELECTRIC REAR WINDOW DEFOGGER; REAR WIPER WITH
INTERMITTENT FEATURE

TINTED GLASS; UNIQUE WHEEL COVERS

OPTIONS

AIR CONDITIONING; AUTOMATIC TRANSMISSION; AM/FM
STEREO CASSETTE RADIO WITH ANTI-THEFT FEATURE; POWER
WINDOWS; ALLOY WHEELS (6J x 14 WITH 205/70 R14 TIRES)